

# M-eux Test

## Run on Device Installation Guide

### Abstract

This Getting Started Guide describes how to install, configure and use the M-eux Test Run on Device. This document is intended for Quality Assurance (QA) engineers and testers who wish to get acquainted with the functionalities of M-eux Test.

© Copyright 2013 Jamo Solutions N.V. No parts of this document may be reproduced, stored in, or introduced into a retrieval system, or transmitted in any form or by any means (electronic, mechanical, photocopying, recording, or otherwise), or for any purpose, without the express written permission of Jamo Solutions.

This document is provided for informational purposes only. Jamo Solutions makes no warranties as to the information in this document. The information contained herein is subject to change without notice.

All trademarks are the properties of their respective owners

## Contents

Contents .....	3
Chapter 1: Introduction .....	4
1.1. Welcome .....	4
1.2. Where to go from here .....	4
Chapter 2: System Requirements .....	5
Chapter 3: Getting your PC ready .....	6
Chapter 4: Getting your device ready .....	7
Chapter 5: Requesting a license .....	8
Chapter 6: Summary .....	10

## Chapter 1: Introduction

### 1.1. Welcome

Welcome to this document which explains the installation process of the M-eux Test Run on Device.

We have made every attempt possible in making the instructions in this guide as clear as possible. However, we recognize that we are unable to cover everything in a single guide. Should you require further assistance, please do not hesitate to visit our [www.jamosolutions.com](http://www.jamosolutions.com) website or to contact our support team at [support@jamosolutions.com](mailto:support@jamosolutions.com).

### 1.2. Where to go from here

This document will get you started creating your first script. If you want to further explore the features of M-eux Test, please visit our website at [www.jamosolutions.com](http://www.jamosolutions.com) for further information on the features of M-eux Test.

## Chapter 2: System Requirements

PC requirements:

Computer/processor	IBM-PC or compatible with a Pentium III or higher (Pentium IV or higher recommended) microprocessor.
Operating System	Windows XP 32-Bit Edition—Service Pack 2, Windows XP 64-Bit Edition—Service Pack 1, Windows Server 2003 32-Bit Edition—Service Pack 1, Windows Server 2003 R2 (32-Bit x86), Windows 2003 64-Bit Edition, Windows Vista 32-bit and 64 bit Windows 7 32-bit and 64 bit.
Memory	Minimum of 2 GB.
Color Settings	Minimum of High Color (16 bit).
Free disk space	10 MB of free disk space for application files and folders and an additional 10 MB of free disk space on the system disk (the disk on which the operating system is installed). The free disk space requirements do not include disk space required for any prerequisites that may need to be installed before installing Run-on-Device.

Following mobile operating systems are supported:

- Android
- BlackBerry
- iOS
- Windows Mobile
- Windows CE

Pre-requisites for each mobile operating system can be found in the corresponding Getting Started guides.

### **Chapter 3: Getting your PC ready**

The PC installation is very simple and straightforward. The setup is explaining. After installation, the documentation of Run-on-Device is installed on the PC together with the CAB file for executing the installation of the tool on the mobile device.

Please note that RoD is only available in Visual Studio 2005 and 2008.

## **Chapter 4: Getting your device ready**

The installation directory on the PC contains a setup subdirectory. This setup directory contains the .cab file to be installed on the mobile device.

Prior to install this cab file on your mobile device, please check following pre-requisites:

Run-on-Device makes use of the .Net Compact Framework 2.0 of Microsoft. The version 2.0 or later versions need to be installed on the device prior to the installation of the Run-on-Device.

Run-on-Device makes use of the agent of M-eux Test. Prior to the installation of Run-on-Device, this agent needs to be installed on the mobile device.

Copy the .cab file to the device and run the cab file by opening the file in the file explorer of the device.

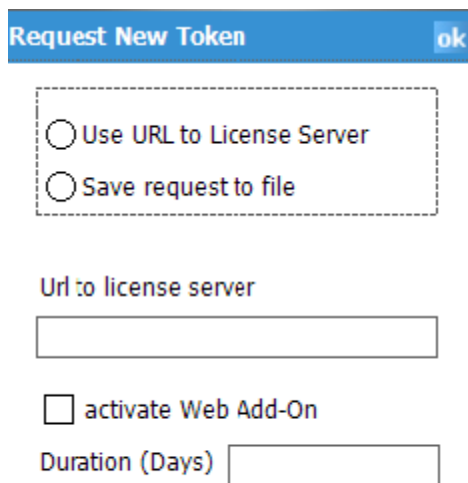
After installation, the Run-on-Device icon is added to the 'Program files' window.

## Chapter 5: Requesting a license

The Run-on-Device product needs a license token in order to use the product. A license token is distributed by the license server of Jamo Solutions. This license server must be reachable from your local PC or someone with PC connected to Server must validate your license file.

If you want to get your tokens directly, connect your device to your local network by either activating the WIFI module or by connecting the device to your PC using ActiveSync. In case of ActiveSync make sure that in the connection settings of ActiveSync the setting to allow data connections on the mobile device is not selected.

Go to the device and open in the 'Program files' window the icon labeled 'M-eux Control Panel'. Activate the menu with label 'Menu' located on the right side of the menu bar. Select the menu entry 'Token', and the sub-menu entry 'New'. Following window opens:



Request New Token ok

Use URL to License Server

Save request to file

Url to license server

activate Web Add-On

Duration (Days)

Check either 'Use URL to License Server' if you want to demand the token directly on the server or 'Save request to file' if you can't connect your mobile device to license server now.

If you want save request to file, you need not to enter the URL to license server.

For direct request, enter the URL to the license server. The URL has the format:

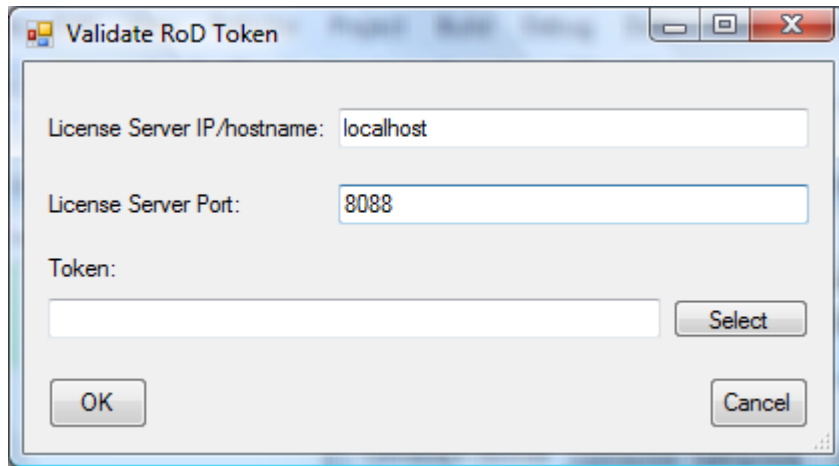
`http://<your license server>:<your port>/LicenseServer2.4/services/LicenseClass`

If you are also going to run test cases against web pages, select the 'activate Web add-on' check box. Enter in the edit field the number of days you want to have the token. During this time period, you will be able to use 'Run-on-Device'. Once this time period passed, the token is released automatically on the license server. In order to retrieve the token from the license server, click on the OK button in the upper right corner of the window.



In the case that you have selected 'Use URL to License server' and you did not enter the right URL or if no token license is available anymore on the service, error dialog boxes will be displayed.

If you saved the request to file, you need to send it to someone who has Device Manager access to license server. In Device Manager you can choose the menu item 'Tools -> License -> Validate RoD Token' and following dialog will appear:



You have to enter a license server hostname/IP and port on where you contact the license server and request file generated by device there. This will generate the validation file, which you have to save on your mobile device. Then you can load the file by using M-eux Control Panel in Menu -> Token -> Load and this will install the tokens on your mobile device.

If you want to release the token before the activation period ends, then you can release it by starting the 'M-eux Control Panel', selecting the 'Menu', then the menu item 'Token' and the sub-menu item 'Release'. You can release all tokens or only the 'web add-on token' if this one was available. You can also release tokens with help of the request file like by requesting new token.

If you want to view the installed tokens and their remaining token time, then you have to open the 'M-eux Control Panel' application, select the 'Menu' entry from the menu bar, select the menu item 'Token' and the sub-menu item 'View'.

## Chapter 6: Summary

Now you should be able to start with the M-eux Test Run on Device.

We wish you a good journey with your test adventure using M-eux Test. If you are facing any issues with our tool, or having trouble about making your test scripts for your test cases, you can always contact us at [support@jamosolutions.com](mailto:support@jamosolutions.com).